

NEW 2021



CUPRA  
FORMENTOR



BEAUTY

PRODUCT HIGHLIGHTS  
EXTERIOR STYLING  
INTERIOR STYLING  
COLOURS  
WHEELS  
UPHOLSTERIES

09

INNOVATION

SAFETY  
COMFORT  
CONNECTIVITY  
3D AR

47

LEISURE

ACCESSORIES  
MUSIC  
ENVIRONMENTAL

61

POWER

POWER HIGHLIGHTS  
HYBRID POWERTRAIN  
ENGINE

37

TECHNICALS

STD & OPT EQUIPMENT  
ACCESSORIES  
ENGINE SPECS

71

WE BELIEVE IN ANOTHER WAY  
TO DRIVE. TO FEEL THE ROAD  
WITHOUT TAKING A SINGLE CURVE  
FOR GRANTED. TO VALUE EVERY  
SINGLE DETAIL. FROM THE WHEEL  
RIMS TO THE REAR COAST TO COAST  
LIGHTS. WE BELIEVE IN THOSE WHO  
ASK IF A BUCKET SEAT IS REALLY  
NECESSARY, OR IF 310 HORSES IS  
TOO MUCH. BECAUSE THE NEW  
CUPRA FORMENTOR IS NOT FOR  
THOSE WHO NEVER QUESTION.  
BUT FOR THOSE WHO DO, AND  
STILL DECIDE TO GO AHEAD.









## ANOTHER WAY TO OBSERVE

BEAUTY. YOU CAN ARGUE ABOUT IT, OR YOU CAN ENJOY IT. BECOME ANGRY WHEN OTHERS CANNOT SEE THE SAME BEAUTY THAT YOU DO, OR UNDERSTAND THAT IT IS PRECISELY THE SUBJECTIVENESS OF BEAUTY THAT MAKES IT ETERNAL. ONE PERSON, ONE BEAUTY. UNTIL THE END OF TIME. THIS OTHER BEAUTY, WITHOUT LIMITS OR RESTRICTIONS, HAS LITTLE TO DO WITH THE OBJECT BEING OBSERVED, AND EVERYTHING TO DO WITH THE EYES THAT LOOK UPON IT.

ISN'T THAT BEAUTIFUL?







# EXTERIOR STYLING



↓ *THE CUPRA  
FORMENTOR*

Pure CUPRA. Complete adrenaline.

Our first bespoke CUPRA model — with our high-performance values at the very core.

A more exclusive, contemporary vision of sportiness. Expertly instilled into an exquisitely sleek, bold design. True timeless modernity for seekers of another way.



Our global range of cars and product specifications varies from country to country. Please, visit your local CUPRA website to know more about the product offer available for you.



↑ *ANOTHER WAY  
FORWARD*

Feel the unique power of finely crafted performance. With a superior selection of distinctive wheels, like the majestic 19" Copper and Sport Black rims, offering the ultimate in CUPRA exclusivity.



## ↑ *LET THE LIGHT IN*

With a panoramic, electric sunroof that spans the entire length and width of the cabin. Illuminating the CUPRA Formentor's interior and allowing you to sit back in pure natural light.

## ↓ *TOP CLASS FRONT END*

Exquisite forward-facing design. Featuring a bolstered bonnet with a robust front grille and enlarged air intakes for increased horsepower.







## ↑ THE POWER OF DESIGN

Featuring an integrated coast to coast light at the rear, accentuating the CUPRA Formentor's sporting prowess and welcoming you as you approach.

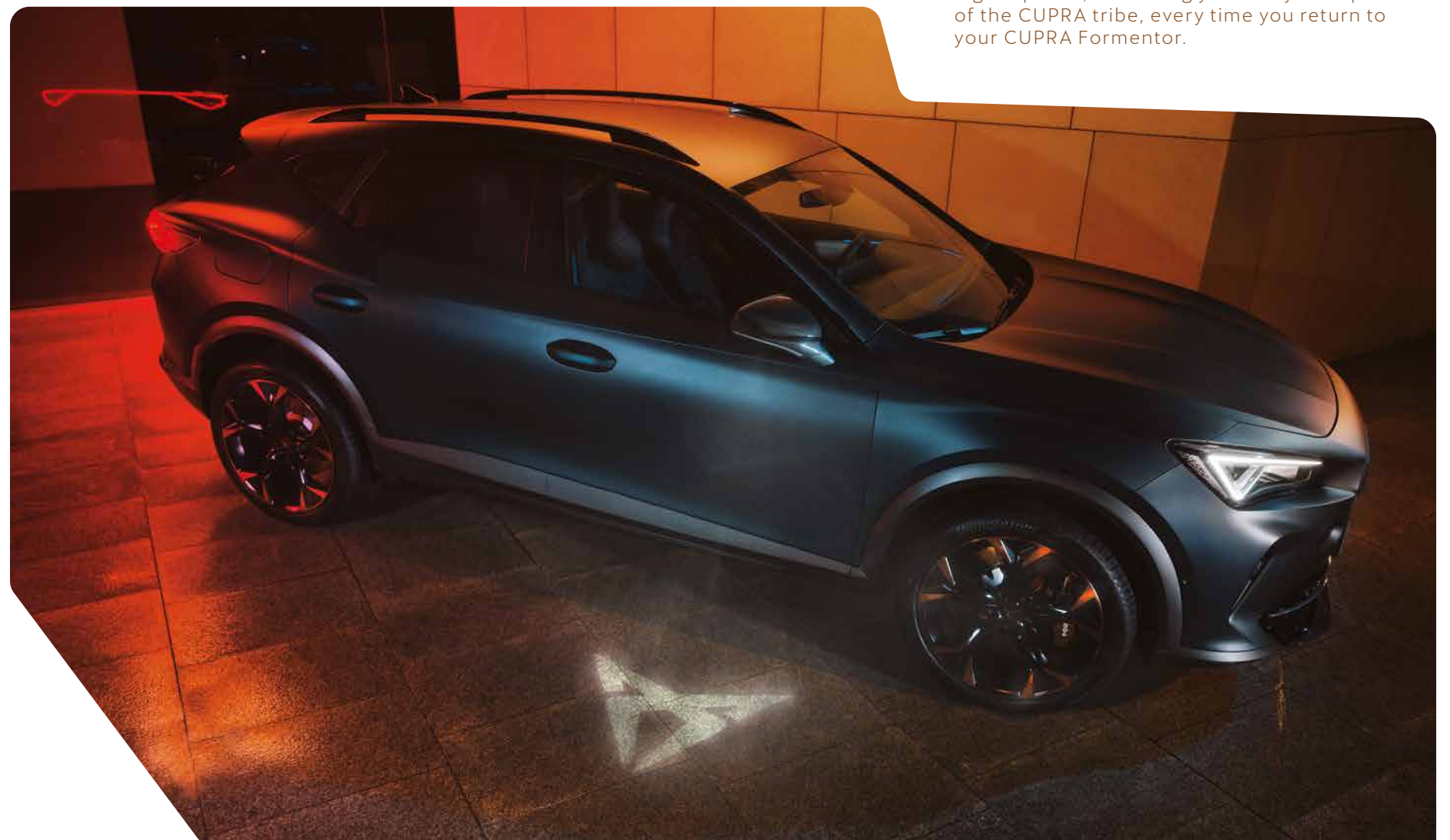
## → UNMISTAKABLE LOOK

Sharp sophistication and brighter long-life illumination technology. The CUPRA Formentor's front LED headlamps cut a distinctly CUPRA profile.



## ↓ A UNIQUE POSITION

Before you even step into the cabin, the CUPRA Welcome light projects the CUPRA logo down onto the floor. A statement of higher power, reminding you that you're part of the CUPRA tribe, every time you return to your CUPRA Formentor.





# INTERIOR STYLING





↓ *SENSORY FILLING  
INTERIOR*

Crafted with meticulous quality throughout the cabin. The best materials and the most innovative technology to give you a refined driving experience.



↑ *IMMERSIVELY DRIVEN*

Everything you need, right at your fingertips. A huge 12" infotainment screen with an integrated navigation system. And a customisable 10.25" Digital Cockpit so you have all the information you need in your line of vision.



Our global range of cars and product specifications varies from country to country. Please, visit your local CUPRA website to know more about the product offer available for you.



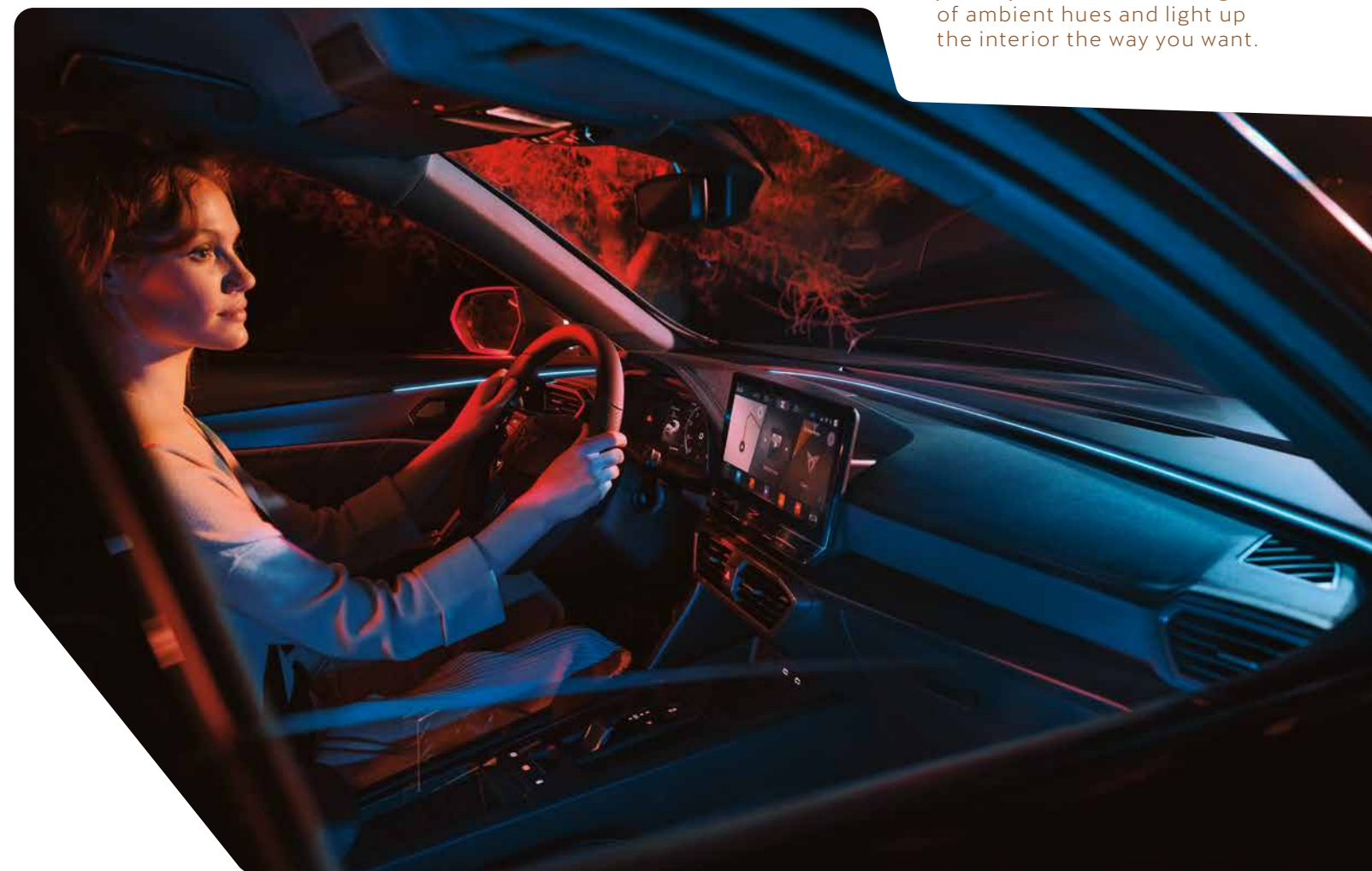


## ↑ *POWER IN YOUR HANDS*

Take complete control. The leather wrapped CUPRA steering wheel with copper stitching provides a premium feel, allowing you to access a full range of driving and infotainment functions without lifting a hand from the wheel.

## ↓ *MOOD SETTING*

A different feeling for every journey. Select from a range of ambient hues and light up the interior the way you want.







Our global range of cars and product specifications varies from country to country. Please, visit your local CUPRA website to know more about the product offer available for you.



## ↑ COMFORT AND SPORTINESS

The genuine leather bucket seats in Petrol blue with exclusive copper stitching boost your driving experience with top tactile quality and support.



# DETAILS





↓ *PETROL BLUE MATTE*



↓ *MAGNETIC TECH MATTE*



→ *URBAN SILVER*



↓ *MIDNIGHT BLACK*



→ *CANDY WHITE*



↓ *DARK CAMOUFLAGE*



↓ *GRAPHENE GREY*



↓ *MAGNETIC TECH*



↓ *DESIRE RED*



Our global range of cars and product specifications varies from country to country. Please, visit your local CUPRA website to know more about the product offer available for you.



→ 19IN EXCLUSIVE 38/7  
SPORT BLACK / COPPER<sup>1</sup>  



↓ 19IN EXCLUSIVE 38/5  
SPORT BLACK / COPPER 



↑ 19IN EXCLUSIVE 38/3  
SPORT BLACK / SILVER  



19IN EXCLUSIVE 38/4 AERO  
SPORT BLACK / SILVER<sup>2</sup>   ↑

19IN EXCLUSIVE 38/6 AERO  
SPORT BLACK / COPPER<sup>2</sup>   ↓



→ 18IN PERFORMANCE 38/2  
SPORT BLACK / SILVER 



→ 18IN PERFORMANCE 38/1  
SPORT BLACK / SILVER 



18IN PERFORMANCE  
SILVER  ↑

Formentor   
Formentor VZ   
Standard   
Optional 

<sup>1</sup>The Brembo brakes are an optional.  
<sup>2</sup>Not compatible with Brembo brakes.

Our global range of cars and product specifications varies from country to country. Please, visit your local CUPRA website to know more about the product offer available for you.





↑ GENUINE PETROL BLUE  
LEATHER BUCKET<sup>1</sup> **F** **VZ**



↓ GENUINE BLACK  
LEATHER BUCKET<sup>2</sup> **F** **VZ**



← TEXTILE BUCKET **VZ**



→ TEXTILE SPORT **F**

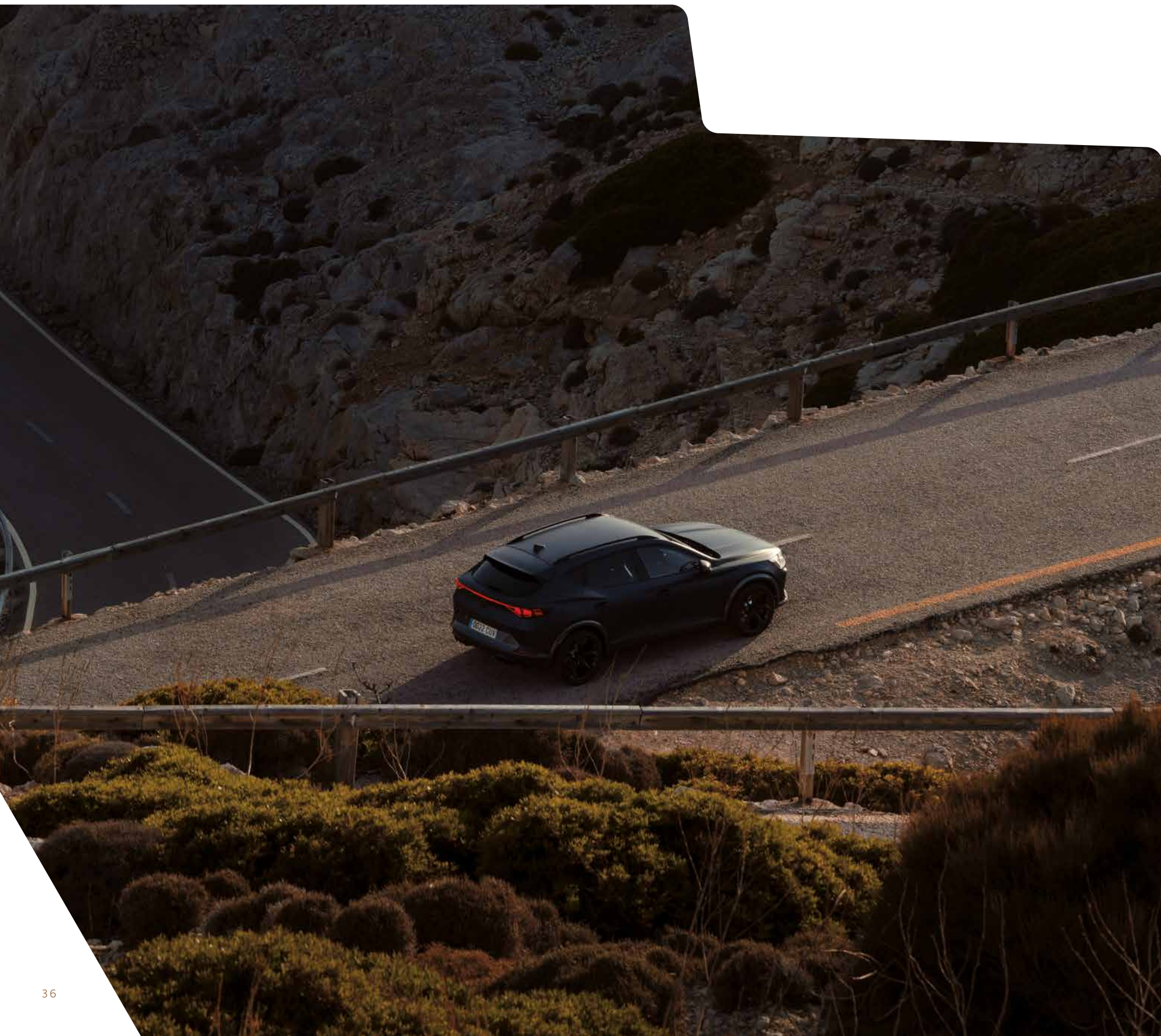
Formentor **F**  
Formentor VZ **VZ**  
Standard **■**  
Optional **■**

<sup>1</sup>Includes Petrol Blue Leather dashboard,  
armrests and door panels.

<sup>2</sup>Available from November 2020.

Our global range of cars and product specifications varies from country to country. Please, visit your local CUPRA website to know more about the product offer available for you.





## ANOTHER WAY TO MOVE

YOU GO RUSHING THROUGH LIFE. YOU WANT EVERYTHING IMMEDIATELY, AND HATE TO WAIT. BUT MAKE NO MISTAKE. HASTE HAS LITTLE TO DO WITH SPEED. HASTE IS YOUR ENEMY. IT MAKES YOU ARRIVE WITHOUT ENJOYING THE JOURNEY. SPEED, CONTRARY TO WHAT MANY PEOPLE THINK, IS NOT ABOUT WHO ARRIVES FIRST. IN FACT, IT'S NOT EVEN ABOUT ARRIVING. IT'S ABOUT MOVING SO FAST THAT YOU CANNOT PERCEIVE A DIFFERENCE BETWEEN THE ROAD AND YOURSELF. CHOOSING THE LONG WAY. KNOWING THERE IS ANOTHER WAY TO DO THINGS. TO STOP ASKING: "DO I REALLY NEED THIS POWER?", AND START ANSWERING:

"I'LL FIND OUT WHEN I ACCELERATE".





↑ *FEEL ALIVE*

Hit 100km/h in just 4.9 seconds with a powerful 310hp engine, enabling up to 250km/h. All the optimum specs you can expect from the CUPRA Formentor.

↓ *PRIME STOPPING POWER*

Harness full control with the award-winning, ventilated Brembo disc brakes.







## ↑ *DCC WITH CUPRA DRIVE MODE*

Fine tune the CUPRA Formentor's suspension, brakes and pedal sensitivity. And switch over to the CUPRA Drive Mode to revel in its high-performance power: modifying your setup to create a more exhilarating driving experience and enhancing the roar of the engine.

## ↓ *SATELLITE BUTTONS*

The racing inspired satellite buttons around the CUPRA steering wheel allow you to shift between drive profiles with ease.



Our global range of cars and product specifications varies from country to country. Please, visit your local CUPRA website to know more about the product offer available for you.



↓ *e-HYBRID POWER*

Pure innovation. The perfect balance. The CUPRA Formentor e-HYBRID (PHEV) offers high-performance with electric benefits: from maximum engine torque to around 60km of emission-free urban driving. Explore all inner-city restricted zones and switch over to petrol when you want to explore outside the city.



Our global range of cars and product specifications varies from country to country. Please, visit your local CUPRA website to know more about the product offer available for you.



↑ *CUPRA CHARGER*

The CUPRA Charger is the optimum solution for powering up your CUPRA Formentor e-HYBRID at home. You can control the charging process remotely from your smartphone and we'll even install it for you.



↓ *CUPRA FORMENTOR VZ*

The CUPRA Formentor's most powerful trim, named in reference to the Spanish word "Veloz", meaning "fast". The CUPRA Formentor VZ trim offers high-performance powertrain options. Coming with 19" alloy wheels, a 12" Navigation system, autonomous assistance technology and performance supporting bucket seats as standard. With the option of upgrading further to add Brembo brakes for a more exclusive feel.



↓ *CUPRA FORMENTOR*

The CUPRA Formentor trim offers a range of powertrain options starting from 150HP. All come with 18" alloy wheels, Sports seats, a 10" central screen and full LED headlights featuring a built-in welcome ceremony. With the option to add multiple autonomous assistance technologies to its setup.

Our global range of cars and product specifications varies from country to country. Please, visit your local CUPRA website to know more about the product offer available for you.





## ANOTHER WAY TO GO FURTHER

FURTHER IS NOT A PLACE. IT IS A WAY OF FACING THE ROAD AHEAD. RELISHING THE FINAL OBJECTIVE, BY FINDING NEW WAYS TO GET THERE. SOMETIMES IT MEANS OVERTAKING THE REST, EVEN LOSING YOUR WAY, IN ORDER TO GET BACK ON TRACK AGAIN. GOING FURTHER IS KNOWING THAT ANOTHER WAY TO DRIVE IS POSSIBLE. OPENS THE ROAD.

IT OPENS THE MIND.



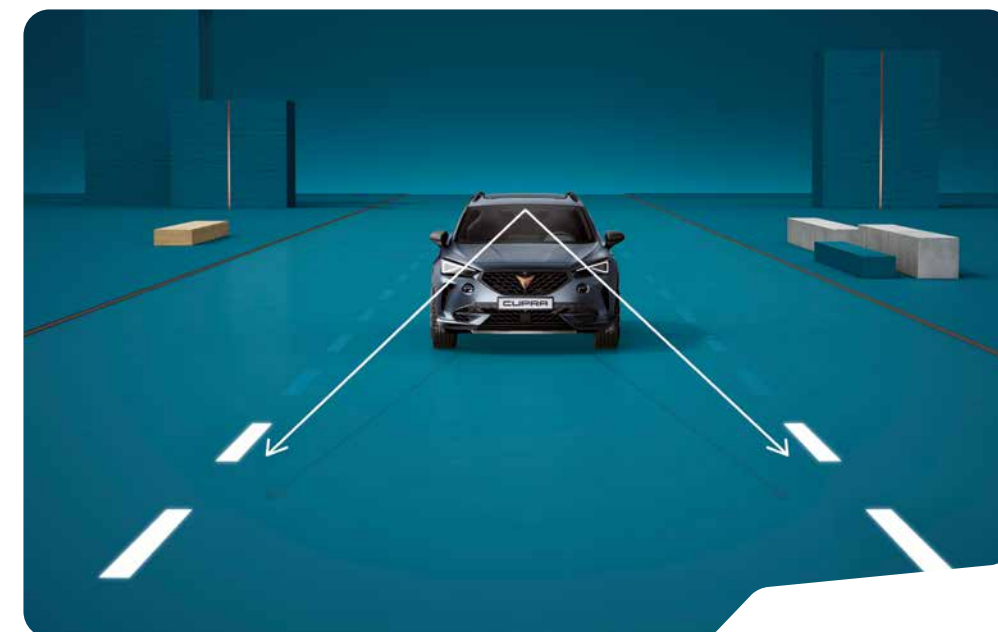
→ *TRAVEL ASSIST*

Fully on track. Travel Assist automatically keeps you in the right lane, keeping the distance with the vehicle in front autonomously.



→ *LANE ASSIST*

With corrective steering technology, Lane Assist keeps you in your chosen lane. Making an effective contribution towards accident prevention.



← *ADAPTIVE CRUISE CONTROL PREDICTIVE*

Makes sure you keep to the right speed at all times. Using maps, as well as the Traffic Sign Recognition function to integrate speed limits, stop signals and road signs en route.



← *TRAFFIC SIGN RECOGNITION*

The integrated front camera lets you see coming speed limits and overtaking restrictions via your Digital Cockpit.





← *PEDESTRIAN  
PROTECTION*

Complete safety.  
The CUPRA Formentor  
stops automatically to  
protect pedestrians.



← *FRONT  
ASSIST*

Front Assist helps to  
prevent collisions by  
stopping automatically  
if an obstacle is  
detected.

→ *EXIT  
WARNING*

When pulling out of a  
spot or getting out  
of the car, Exit Warning  
alerts you of any  
oncoming traffic or  
pedestrians nearby,  
so you can always leave  
safely.



→ *REAR  
TRAFFIC  
ALERT*

When reversing out  
of a tight parking space,  
the Rear Traffic Alert  
scans your blind spot,  
recognising vehicles  
approaching in  
cross-traffic behind  
you. The system  
will warn you, and if  
you don't react, can  
even initiate brake  
intervention.







## ↖ 12" NAVI SYSTEM

Always located. Navigate via the 12" touchscreen with connected mapping services. And with Wireless Full Link, your smartphone seamlessly syncs up so you can display your favourite apps and functions on screen.



## ← BEATS AUDIO

Feel more alive with every ride. The CUPRA Formentor's BeatsAudio™ System is powered by an impressive 340W amplifier, giving you full high-fidelity sound.



## ↑ 10.25" DIGITAL COCKPIT

Front and centre. The 10.25" Digital Cockpit displays all the detail you need, right in your line of vision.

## ↘ CONNECTIVITY BOX

Easy technology. Place your smartphone in the Connectivity Box to amplify signal, charge seamlessly and sync to play music via the premium BeatsAudio™ system.





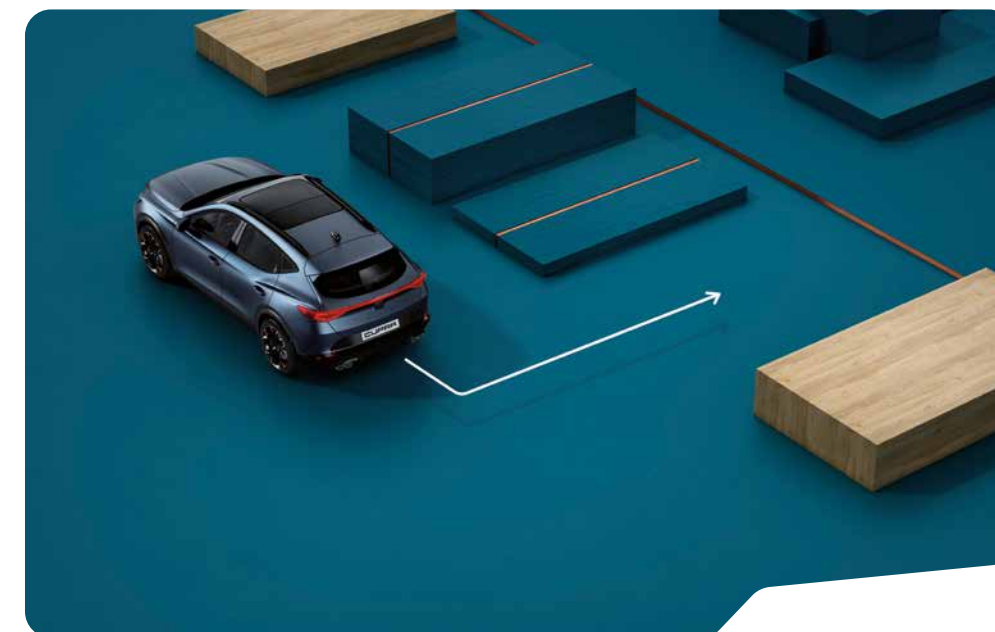
## → TOP VIEW <sup>1</sup>

Master the art of parking with Top View: a birds-eye view, allowing you to get into even the tightest spot.



## → AUTONOMOUS PARKING

The CUPRA Formentor makes straightening up a stress-free and hands-free process. With advanced functions like Park Assist, simply select a space and let your car guide you in autonomously.



## ← KESSY

Convenient and streamlined. The KESSY wireless unlocking system makes accessing your CUPRA Formentor a keyless experience.



## ← A WARM WELCOME

The Parking Heater lets you heat up your engine remotely before even stepping in. The perfect solution on colder days.





# AN AUGMENTED REALITY EXPERIENCE

DISCOVER THE CUPRA  
FORMENTOR WITH AN  
INTERACTIVE, AUGMENTED  
REALITY EXPERIENCE.

SIMPLY SCAN THE QR CODE  
WITH YOUR SMARTPHONE'S  
CAMERA. FOLLOW THE  
LINK AND PARK THE CUPRA  
FORMENTOR ANYWHERE  
YOU WANT TO START  
EXPLORING IT DOWN TO  
THE LAST DETAIL.





## ANOTHER WAY TO ENJOY

LEISURE TIME OFFERS YOU ANOTHER  
STYLE OF LIFE. ONE THAT CANNOT BE  
COUNTED WITH EGO. AND IT CANNOT  
BE BOUGHT OR SOLD. THERE ARE  
THOUSANDS OF WAYS TO HAVE FUN  
AND, WHEN YOU DO, YOUR ONLY GOAL  
IS TO ENJOY THE MOMENT, AS SIMPLE  
AS IT SOUNDS. HAVING FUN IS AN  
ILLOGICAL ACT.

SO, TAKE IT SERIOUSLY.



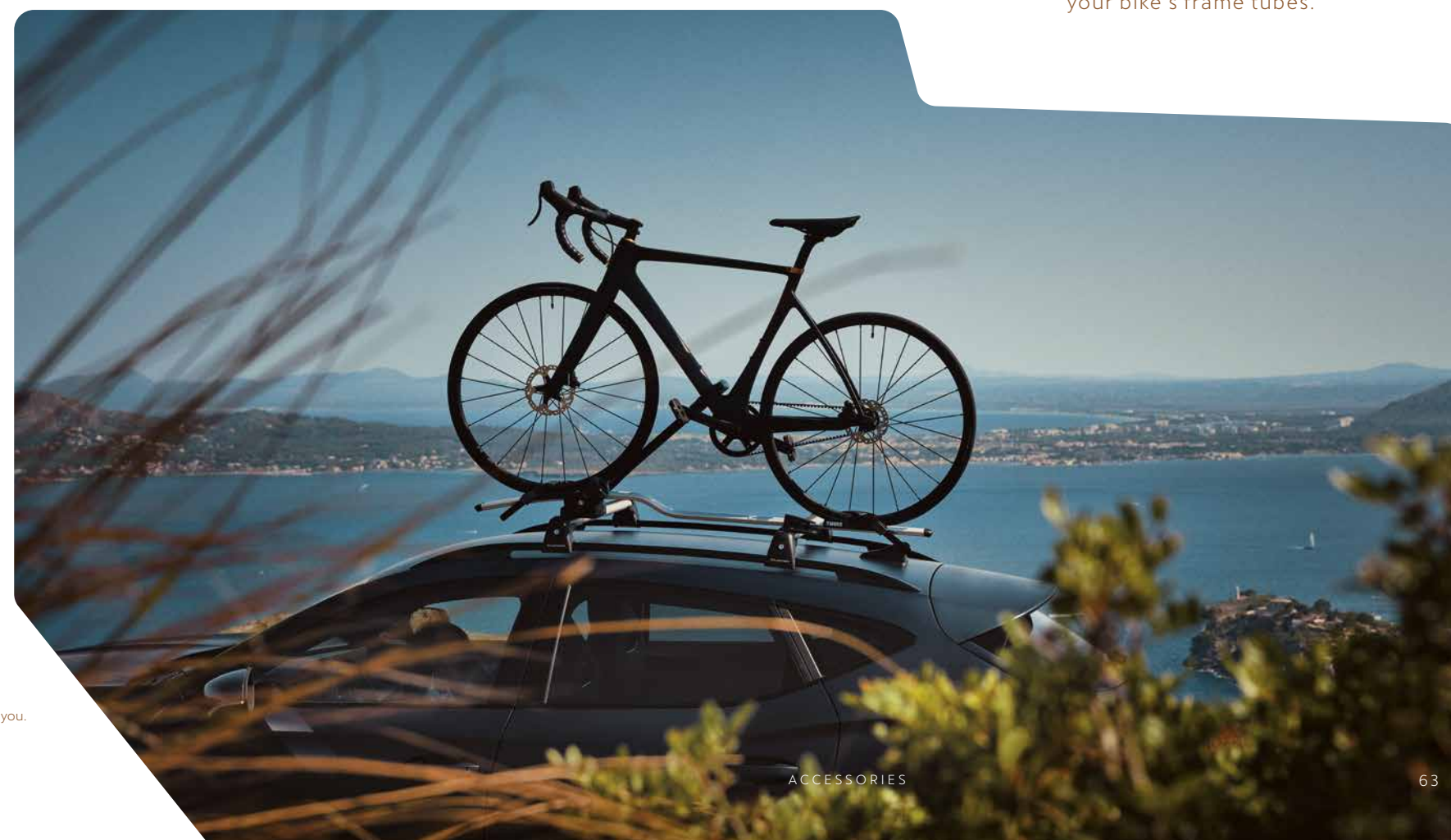




## ↑ *TOWING BIKE RACK*

Take everyone with you on adventures. The towing bike rack is tailored to your CUPRA Formentor, allowing you to load up 3 at a time.

Our global range of cars and product specifications varies from country to country. Please, visit your local CUPRA website to know more about the product offer available for you.



## ↓ *BIKE RACK*

Leave no path untouched. Load up your bike quickly with this easy-to-mount, configurable bike rack. With easy fastening to provide long-lasting care for your bike's frame tubes.





## ↑ TOWING SKI RACK

Leave the real challenge for the piste. With the towing ski rack, you can easily and securely transport up to 6 pairs of skis or 2 snowboards on the back of your CUPRA Formentor.

## → SKI RACK XTENDER

No need to strain your back to load your skis, the CUPRA Ski Rack Xtender slides out easily for convenient loading and safe transport to the snow.



## ↗ SURF RACK

Always ready to chase the waves. The rack adapts perfectly to the shape of your surfboard and allows you to carry two along.



Our global range of cars and product specifications varies from country to country. Please, visit your local CUPRA website to know more about the product offer available for you.



# ALIVE - CUPRA FORMENTOR FT. LOYLE CARNER

AN EXCLUSIVE SONG  
FOR THE CUPRA  
FORMENTOR BY LOYLE  
CARNER, THE MUSICIAN  
THAT'S REDEFINING THE  
UK'S HIP HOP SCENE.  
OPEN YOUR SMARTPHONE'S  
CAMERA, SCAN THE CODE  
BELOW, FOLLOW THE LINK  
AND HEAR HOW IT FEELS  
TO DRIVE THE NEW CUPRA  
FORMENTOR.





# ENVIRONMENTAL INFORMATION

## AIR QUALITY

Fitted with an improved catalytic converter that reduces harmful exhaust gasses in line with Euro 6 emission standards. The CUPRA Formentor's Diesel models have SCR (selective catalytic reduction) technology with AdBlue® twin dosing to further minimise nitrogen oxide emissions.

## LIGHTS

Both headlights and rear lights are 100% LED, offering a low power consumption rating.

## RENEWABLE AND RECYCLED MATERIALS

Use of renewable materials (cotton, natural rubber and cellulose) and recycled materials (plastics) in various parts of the vehicle.

## TYRES

Low rolling resistance tyres provide a reduction in the rolling resistance coefficient.

## BRAKES

Incorporation of RBO technology (which reduces the friction between the brake pad and disc), permits an emissions reduction of up to 1g CO<sub>2</sub> / 100 km.

## BODYWORK

The CUPRA Formentor's improved proportions and lower positioning on the road allow for a reduction in aerodynamic drag.

## ACOUSTICS

All versions incorporate a double-seal system on the doors, which reduces noise levels and enhances comfort.

## SEATS

The use of new PUR foam formulations reduces the emission of volatile organic compounds (VOCs) in the cabin interior by up to 50%.







## TECHNICAL SPECIFICATIONS

Discover all the technical specifications by engine type, from emissions and consumption data; to performance statistics and transmission types.

Here you'll find all the technical aspects covered so you can make an informed selection when it comes to your CUPRA Formentor.



|               |  |                                    |
|---------------|--|------------------------------------|
| PETROL ENGINE | 2.0 TSI 310HP (228kW)<br>DSG-7 Start/Stop 4DRIVE |                                    |
|               | Cylinder/Valve (Total)                           | 4 / 16                             |
|               | Displacement (cc)                                | 1,984                              |
|               | Cylinder bore and stroke (mm)                    | 82.5 / 92.8                        |
|               | Compression ratio                                | 9.3                                |
|               | Maximum power (kW (HP)/rpm)                      | 228 (310) / 5,450 - 6,600          |
|               | Maximum torque (Nm/rpm)                          | 400 / 2,000 - 5,450                |
|               | Fuel supply system                               | TSI Direct Injection               |
|               | Ignition   | Electronic map-controlled ignition |
|               | Atmospheric/Supercharged                         | Turbo charged                      |
|               | Fuel type  | ROZ 98                             |
|               | Oil capacity in initial fill (l)                 | 6.6                                |
|               | Alternator (A)                                   | 140 ME                             |
|               | Battery (Ah/A)                                   | 68-70 / 380-420                    |

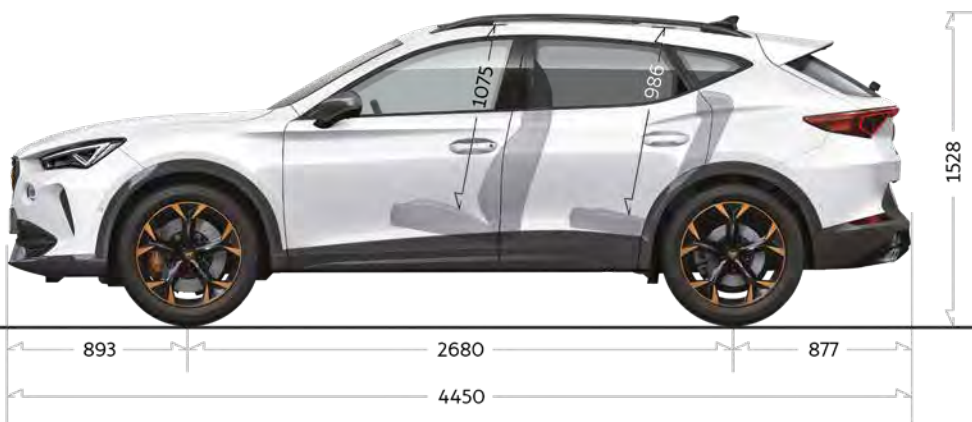
|             |                             |     |
|-------------|-----------------------------|-----|
| PERFORMANCE | Maximum speed [km/h]        | 250 |
|             | Acceleration 0-100 km/h (s) | 4.9 |

|                     |  |         |
|---------------------|--|---------|
| FUEL<br>CONSUMPTION | Urban (l/100 km)                           | 9.6     |
|                     | Extra urban (l/100 km)                     | 6.5     |
|                     | Combined (l/1000 km)                       | 7.7     |
|                     | CO <sub>2</sub> Combined WLTP Range (g/km) | 8.2-9.0 |

|               |  |         |
|---------------|--|---------|
| MASS EMISSION | 2.0 TSI 310HP (228kW)<br>DSG-7 Start/Stop 4DRIVE |         |
|               | CO <sub>2</sub> Urban (g/km)                     | 219     |
|               | CO <sub>2</sub> Extra urban (g/km)               | 150     |
|               | CO <sub>2</sub> Combined (g/km)                  | 175     |
|               | CO <sub>2</sub> Combined WLTP Range (g/km)       | 186-203 |

|              |                                      |                              |
|--------------|--------------------------------------|------------------------------|
| TRANSMISSION | Gearbox type                         | DQ381-7A                     |
|              | Ratios                               |                              |
|              | I                                    | 3.400                        |
|              | II                                   | 2.750                        |
|              | III                                  | 1.767                        |
|              | IV                                   | 0.925                        |
|              | V                                    | 0.705                        |
|              | VI                                   | 0.755                        |
|              | VII                                  | 0.635                        |
|              | R                                    | 2.900                        |
|              | Group 1 ratio                        | 4.813                        |
|              | Group 2 ratio                        | 3.667                        |
|              | Group 3 ratio                        | -                            |
|              | Speed 1000 rpm in IV/V/VI/VII (km/h) | 27.93 / 36.64 / 44.91 / 53.4 |





CHASSIS

|  |  |
|--|--|
| 2.0 TSI 310HP (228kW)<br>DSG-7 Start/Stop 4DRIVE |  |
| Front suspension                                 | Independent type McPherson - coil springs - hydraulic shock absorber               |
| Rear suspension                                  | Multilink axle, coil springs and hydraulic shock absorber                          |
| Steering System                                  | R-EPS Progressive steering   |
| Turning diameter (m)                             | 10.7   |
| Brake system                                     | Dual hydraulic circuit and brake system diagonal split with electric brake booster |
| Front and rear brake type                        | Front and rear ventilated disc brakes  |
| Front brakes (mm)                                | CUPRA brakes: 340×30<br>Brembo brakes: 370×32                                      |
| Rear brakes (mm)                                 | 310×22   |

WHEELS

|       |                |
|-------|----------------|
| Rims  | 8x19 ET40      |
| Tyres | 245/40 R19 94W |

PACKAGE  
(In running  
without driver)

|  |                       |
|--|-----------------------|
| 2.0 TSI 310HP (228kW)<br>DSG-7 Start/Stop 4DRIVE |                       |
| Body Type  | A-CUV                 |
| Length/width/height (mm)                         | 4,450 / 1,839 / 1,511 |
| Wheelbase (mm)                                   | 2,680                 |
| Front/Rear track (mm)                            | 1,585 / 1,559         |
| Boot capacity (l)                                | 420                   |
| Fuel tank capacity (l)                           | 55                    |

WEIGHTS

|  |           |
|--|-----------|
| In running order with driver (kg)            | 1,644     |
| In running order with driver (kg) Front/Rear | 973 / 671 |
| Maximum weight allowed (kg)                  | 2,140     |
| Maximum towing weight without brake (kg)     | 750       |
| Maximum towing weight w/brake 8% (kg)        | 2,000     |
| Maximum towing weight w/brake 12% (kg)       | 1,800     |





CUPRA is committed to a policy of continuous product development and reserves the right to make changes to specifications, colours and prices without notice. The information in this brochure can therefore be given as guidance only. While CUPRA makes every effort to ensure that specifications are accurate at the time of publication, you should always check with your authorised CUPRA Partner for the latest information. Due to limitations of the printing process the colours reproduced in this brochure may vary slightly from the actual paint colour and material — 10/2021.

Printed in Spain.